



passive fire protection and insulation

Suppliers of passive fire products,
acoustic and specialist insulation
Manufacturers of the Safire® Fire Stopping Range

Uniclass	EPIC
CI/SfB	

SAFIRE® FLOOR EDGE FIRE SLAB Fire Rated Cavity Barrier



120
mins

Specifically designed as a cavity fire barrier within buildings, Safire Floor Edge Fire Slab can be installed horizontally or vertically and is suitable for cavity widths between 50mm and 400mm in both masonry and curtain wall constructions.

Safire Floor Edge Fire Slab is 100mm thick mineral wool coated on one side with Fireus special formula ablative coating.

Slabs are supplied in 1200mm x 600mm x 100mm size and can be easily and quickly cut to desired size.

Slabs can be profiled by hand to the desired shape for installation.

- Tested to BS 476: Part 20
- for cavities from 50mm to 400mm
- fast and easy to fix
- 120mins integrity & insulation



SAFIRE® FLOOR EDGE FIRE SLAB

Fire rated cavity barrier

APPLICATIONS

Safire Floor Edge Fire Slab is typically used as a fire resistant barrier between the edge of a concrete floor slab and curtain walling which is stable in fire. The slab can be cut and used to fill cavities from 50mm to 400mm wide. (N.B. curtain walling systems should be properly secured to the floor.)

Safire Floor Edge Fire Slab also provides upto 2 hours fire resistance in voids upto 300mm.

It can also be used to provide 2 hours protection in masonry wall cavities upto 400mm wide. Slabs can be used both horizontally and vertically.

EXTERNAL CLADDING

When used in conjunction with profiled metal cladding, Safire Floor Edge Fire Slab should be cut to suit the profile of the cladding.

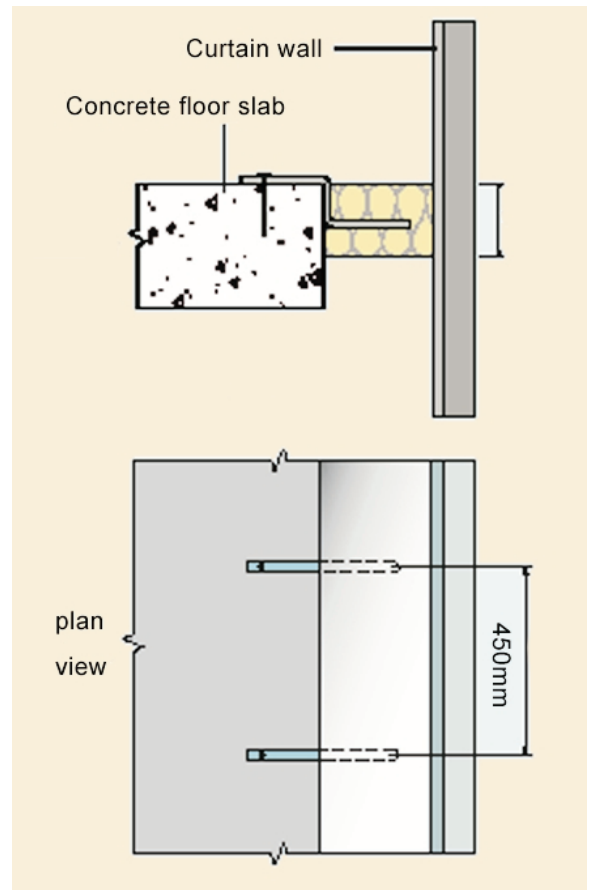
INSTALLATION

Safire Floor Edge Fire Slab can be cut and profiled on site using a sharp knife or saw and a straight edge. Cutting should be along the 1200mm edge.

Fixing brackets (available separately) can be re-profiled by hand and cut as necessary to allow at least 75% penetration of the slab. Brackets should be fixed at a maximum of 450mm centres.

After fitting the slab into the cavity, brackets should then be secured to the edge of the concrete floor using suitable masonry fixings.

For cavity widths of 250mm or more, joints between adjacent lengths of slab should be sealed on the top surface with Safire® Intumescent Mastic.



STANDARDS & APPROVALS

Safire Floor Edge Fire Slab has been tested and assessed in accordance with BS 476: Part 20 1987 and has achieved 120 minutes for both integrity and insulation as detailed in BRE 233314 22/03/07.

Other products in the Fireus Products range:

FIRE BARRIERS: Total Comfort Rock Fibre Fire Blanket

FIRE STOPPING: Compound
Fire Collars
Barriers (Batts)
Sealants
Fire Pillows
Expansion Joints
Flamestop60

THERMAL: Industrial thermal and acoustic insulation

For information on any of the above, or the name of your nearest distributor, please contact our sales department on tel. 01524 388898.

Alternatively, product information is available from our web site at www.fireus.co.uk

Your distributor:



Fireus Ltd.

Unit 6 Thetis Road, Lune Industrial Estate, Lancaster, LA1 5QP

Tel. 01524 388898 | Fax. 01524 383724 | Email. info@fireus.co.uk | Web. www.fireus.co.uk