

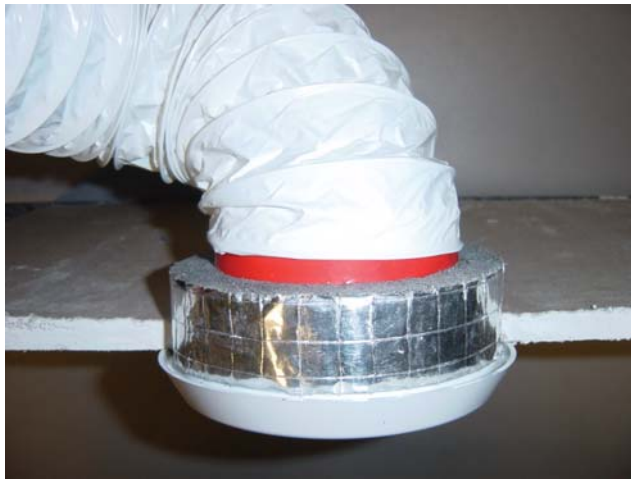


passive fire protection and insulation

Suppliers of passive fire products,  
acoustic and specialist insulation  
Manufacturers of the Safire® Fire Stopping Range

Uniclass	EPIC
CI/SIB	

## Fire Rated Ceiling Fan Closures



# 60 mins

Developed to provide maximum protection for holes created by the introduction of the most popular sizes of polymeric recessed ceiling fans and vents, with minimal installation time.

In a fire situation, the sleeve expands internally to crush the spigot of the fan/vent and create an effective barrier against both heat and flames. Fireus ceiling Fan Closures require no additional support and will only expand inwards.

- Tested to BS476 Part 20
- Restores and maintains the integrity of 30 and 60 minute fire rated ceilings
- Sleeve fits in seconds
- No mastic, screws or support required
- Sleeve is invisible once fan/vent fitted
- Lightweight and can be fitted from above or below the ceiling
- Easy to retro-fit into existing fans/vents
- Provides an effective acoustic barrier between fan/vent and ceiling

- Available in a range of sizes to suit the diameter of fans and vents

### 30 Minute Plasterboard / Timber Ceiling

Duration of effective protection - 36 mins  
Test standard - BS476 Part 21  
Test number - Chilt/IF06015

### 60 Minute Plasterboard / Timber Ceiling

Duration of effective protection - 72 mins  
Test standard - BS476 Part 21  
Test number - Chilt/IF06021

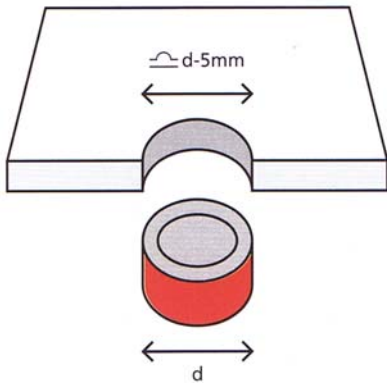


# Fire Rated Ceiling Fan Closures

## INSTALLATION

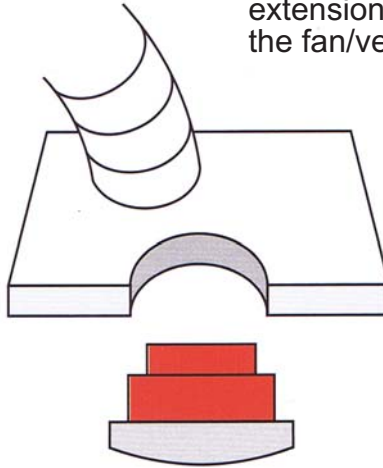
### Step 1

Use OD of sleeve as template and cut hole in ceiling to provide a snug fit



### Step 2

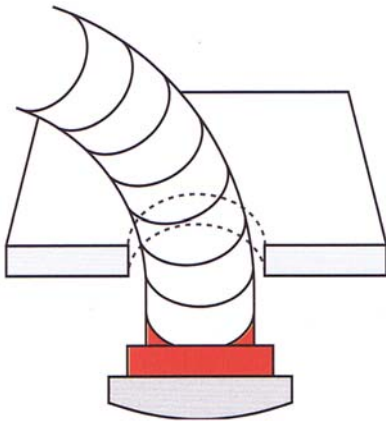
Place sleeve and spigot extension, if required \*, onto the fan/vent spigot



\* The spigot extension is not required unless the spigot length of the fan/vent is not long enough to attach to the hose or rigid ducting with the sleeve fitted. The spigot extension can be shortened for 'tight' ceiling voids.

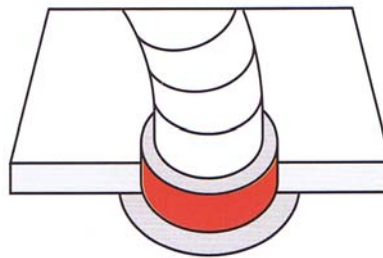
### Step 3

Attach flexible hose to spigot



### Step 4

Ease the fan and sleeve into the ceiling cut-out and locate with rigid ducting if required. Attach fan/vent to ceiling in the normal way



Other products in the Fireus Products range:

**FIRE BARRIERS:** Total Comfort Rock Fibre Fire Blanket

**FIRE STOPPING:** Compound  
Fire Collars  
Barriers (Batts)  
Sealants  
Fire Pillows  
Expansion Joints  
Flamestop60  
Flamestop FSI

**THERMAL:** Industrial thermal and acoustic insulation

For information on any of the above, or the name of your nearest distributor, please contact our sales department on tel. 01524 388898.

Alternatively, product information is available from our web site at [www.fireus.co.uk](http://www.fireus.co.uk)

Your distributor:



**Fireus Ltd.**

Unit 6 Thetis Road, Lune Industrial Estate, Lancaster, LA1 5QP

Tel. 01524 388898 | Fax. 01524 383724 | Email. [info@fireus.co.uk](mailto:info@fireus.co.uk) | Web. [www.fireus.co.uk](http://www.fireus.co.uk)