



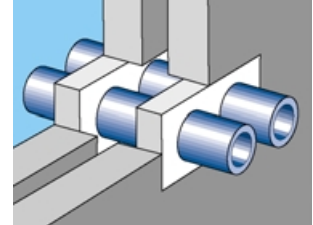
Suppliers of passive fire products,
acoustic and specialist insulation
Manufacturers of the Safire® Fire Stopping Range

Uniclass	EPIC
CI/SIB	

SAFIRE® COATED BATTS

Type B Multi Layer with airgap

Recommendations to reinstate the integrity/insulation of Safire® Coated Batts penetrated by various services under European testing standards



Type B

Multi layer pre-coated Safire Batt with airgap, services independently supported on either side of seal

For use in apertures upto 1200mm high by any width

Fire Resistance: integrity & insulation

X in red = without coatback X in blue = with coatback (coatback with Safire® Multicoat for 150mm both sides)

	30		60		90		120		180		240	
	Int	Ins	Int	Ins	Int	Ins	Int	Ins	Int	Ins	Int	Ins
Blank Seals	X	X	X	X	X	X	X	X				
Small diameter individual cables (<20mm)	X	X	X	X	X	X	X	X				
Medium diameter individual cables (21-40mm)	X	X	X	X	X	X	X	X				
Large diameter individual cables (41-75mm)	X	X	X	X	X	X	X	X				
Small diameter bunched cables (<20mm)	X	X	X	X	X	X	X	X				
Medium diameter bunched cables (21-40mm)	X	X	X	X	X	X	X	X				
Large diameter bunched cables (41-75mm)	X	X	X	X	X	X	X	X				
Cable trays/ladders	X	X	X	X	X		X					
Trunking upto 250x250mm	X	X2	X	X2	X	X2	X	X2				
Steel/cast iron pipes upto 250mm diameter	X	X	X	X	X	X	X	X				
PP,ABS plastic pipes upto 110mm diameter	X	X	X	X	X		X					
Copper pipes upto 108mm diameter	X	X2	X	X2	X	X2	X	X2				
PVC pipes upto 168mm diameter	X	X	X	X	X		X					

x2=insulation ratings can be achieved on steel and copper pipes by using Fireus fire sleeves on both sides with a projection of 500mm
Insulation ratings can be achieved on trunking by using appropriate insulation

Notes:

The accuracy of this specification is guaranteed provided that:

- only original Fireus products as defined in the specification are used
- the specific products are used and installed only by a competent and experienced user in a manner which represents the state of the art and by strictly conforming to the calculations and conditions mentioned in the specification as well as all relevant technical instructions, installation instructions and other data sheets of Fireus.
- the proposed performance, the listed prerequisites and criteria conform with the conditions actually existing on the jobsite and have been checked and agreed by the user.

Fireus Ltd.

Unit 6 Thetis Road, Lune Industrial Estate, Lancaster, LA1 5QP

Tel. 01524 388898 | Fax. 01524 383724 | Email. info@fireus.co.uk | Web. www.fireus.co.uk